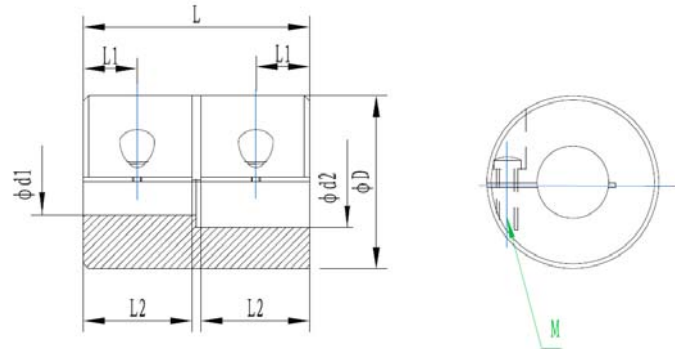


RGS-CE Rigid coupling (OD from 16 to 32mm)


Feature:

- Light in weight, low inertia and high sensitivity
- Aluminum alloy and stainless steel are both available


Dimensions

Code	D (mm)	d1/d2 (mm)	L (mm)	L1 (mm)	L2 (mm)	Clamp Screw	
						Thread	Wrench Torque(N·m)
RGS16CE	16	5~6	16	3.75	7.5	M2.5	1.0
RGS16CE-SS							
RGS20CE	20	6~8	20	4.75	9.5	M2.5	1.0
RGS20CE-SS							
RGS25CE	25	8~10	25	6.0	12.0	M3	1.5
RGS25CE-SS							
RGS32CE	32	10~14	32	7.75	15.5	M4	2.5
RGS32CE-SS							

Technical properties

Code	Rated torque (N·m)	Max torque(N·m)	Max speed(rpm)	Moment of inertia (Kg·m ²)	Weight(g)
RGS16CE	0.3	0.6	39000	3.2x10 ⁻⁷	8.8
RGS16CE-SS				8.2x10 ⁻⁷	22
RGS20CE	0.5	1	31000	8.7x10 ⁻⁷	15
RGS20CE-SS				2.4x10 ⁻⁶	41
RGS25CE	1	2	25000	2.7x10 ⁻⁶	29
RGS25CE-SS				7.3x10 ⁻⁶	80
RGS32CE	2	4	19000	9.3x10 ⁻⁶	61
RGS32CE-SS				2.5x10 ⁻⁵	160

※ Note: Inertia moment and the weight are calculated as per the maximum aperture. If you need other dimensions, please feel free to contact us.