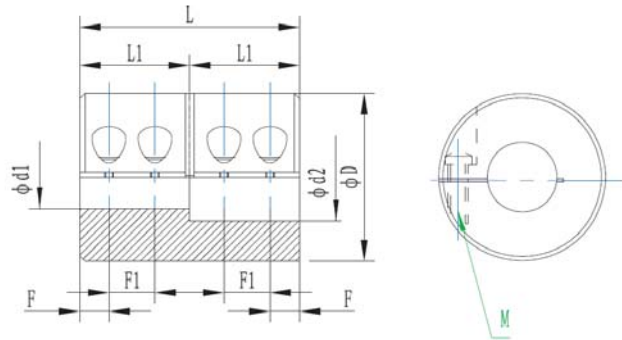


RGL-CE Rigid Coupling (OD from 16 to 32mm)


Feature:

- Elongated rigid coupling
- Can be used as connecting sleeve
- Aluminum alloy and stainless steel both available


Dimensions

Code	D (mm)	d1/d2 (mm)	L (mm)	L1 (mm)	F (mm)	F1 (mm)	Clamp Screw nut	
							Thread	Wrench Torque (N·m)
RGL16CE	16	5~6	22	11	2.5	5.5	M2	0.5
RGL16CE-SS								
RGL20CE	20	6~8	24	12	2.5	6	M2	0.5
RGL20CE-SS								
RGL25CE	25	8~10	36	18	4.5	9	M2.5	1
RGL25CE-SS								
RGL32CE	32	10~14	45	20	4.0	10	M3	1.5
RGL32CE-SS								

Technical Properties

Code	Rated torque (N·m)	Max torque(N·m)	Max speed(rpm)	Moment of inertia (Kg·m ²)	Weight(g)
RGL16CE	0.3	0.6	39000	3.4x10 ⁻⁷	10
RGL16CE-SS				8.9x10 ⁻⁷	25
RGL20CE	0.5	1	31000	9.2x10 ⁻⁷	18
RGL20CE-SS				2.5x10 ⁻⁶	45
RGL25CE	1	2	25000	3.4x10 ⁻⁶	38
RGL25CE-SS				9.2x10 ⁻⁶	100
RGL32CE	2	4	19000	1.0x10 ⁻⁵	70
RGL32CE-SS				2.7x10 ⁻⁵	180

※ Note: Inertia moment and the weight are calculated as per the maximum aperture. If you need other dimensions, please feel free to contact us.